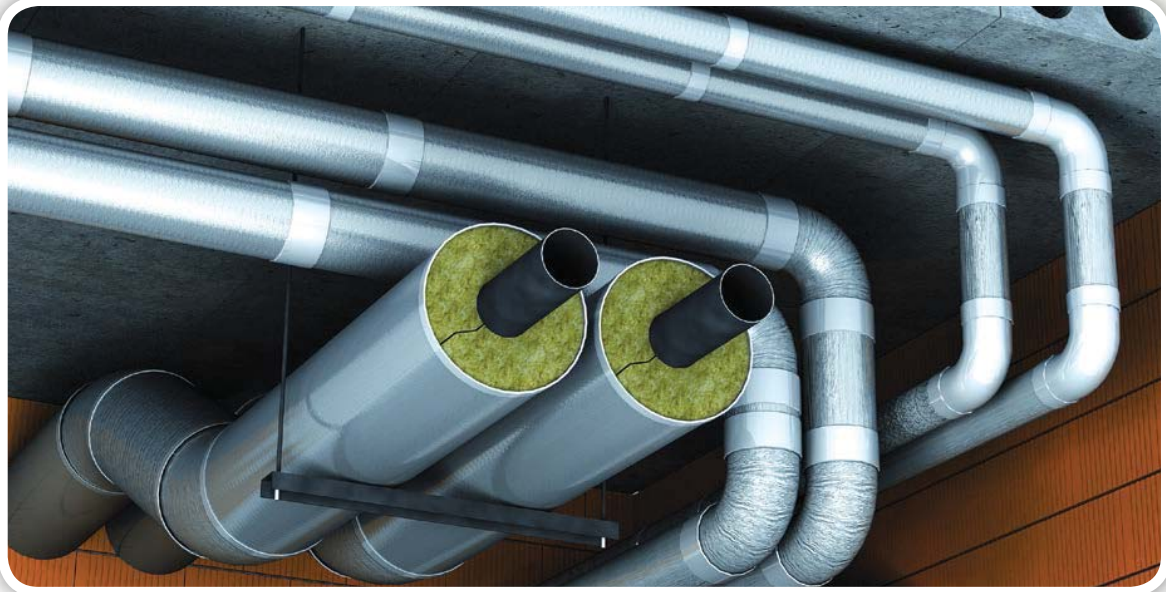


LRB Mattress

Industrial and Technical Insulation



LRB Mattress

LRB Mattress is a lightly bonded stone wool mat stitched on galvanised wire mesh using galvanised wire. The wired mat is suitable for thermal acoustic insulation of industrial application reaching high temperatures, such as industrial pipe work, boiler walls, furnaces and smoke ducts. Stainless steel mesh, stainless steel binding wire and/or aluminium foil facing are available upon request.

Product properties

	Performance						Standard	
Thermal Conductivity *	Mean Temp (°C)	50	100	150	200	250	300	
	λ(W/mK)	0.037	0.038	0.048	0.055	0.063	0.071	EN 12667/ ASTM C177
	λ(W/mK)	0.038	0.042	0.049	0.057	0.064	0.076	IS 8183 / IS 3144
Nominal Density	80 kg/m3							
Heat Resistance	No visible deterioration of the fibrous structure. No evidence of self heating. No fusion of fibers @400°C							IS 8183 / IS 3144
Maximum Service Temperature	640°C (1184°F) 750°C (1382°F)							EN 14706 ASTM C411
Incombustibility*	1.82%							IS 8183 / IS 3144
Reaction to Fire	EuroClass A1 Surface burning characteristics; Flame spread = passed, Smoke development = Passed							EN 13501-1 ASTM E84 (UL 723)
pH*	7.98							IS 8183 / IS 3144
Water leachable chloride content*	Chloride content 5.8 mg/Kg, Conforms to the stainless steel corrosion specification as per ASTM test methods C 692 and C 871							EN 13468 ASTM C795 ASTM C871
Sulphur content*	0.096%							IS 8183 / IS 3144
Water absorption*	Water absorption 0.18Kg/m2 Water vapour absorption (vapor sorption) 0.016% vol							EN 1609 ASTM C1104/C1104M
Shot Content *	> 150 μm 6.9 %							ASTM 1335
	> 300 μm 1.54 %							
	> 850 μm 0.61 %							
	> 250 μm 3.8%							IS 8183 / IS 3144
	> 500 μm 1.45 %							

Note:- * Typical Values

